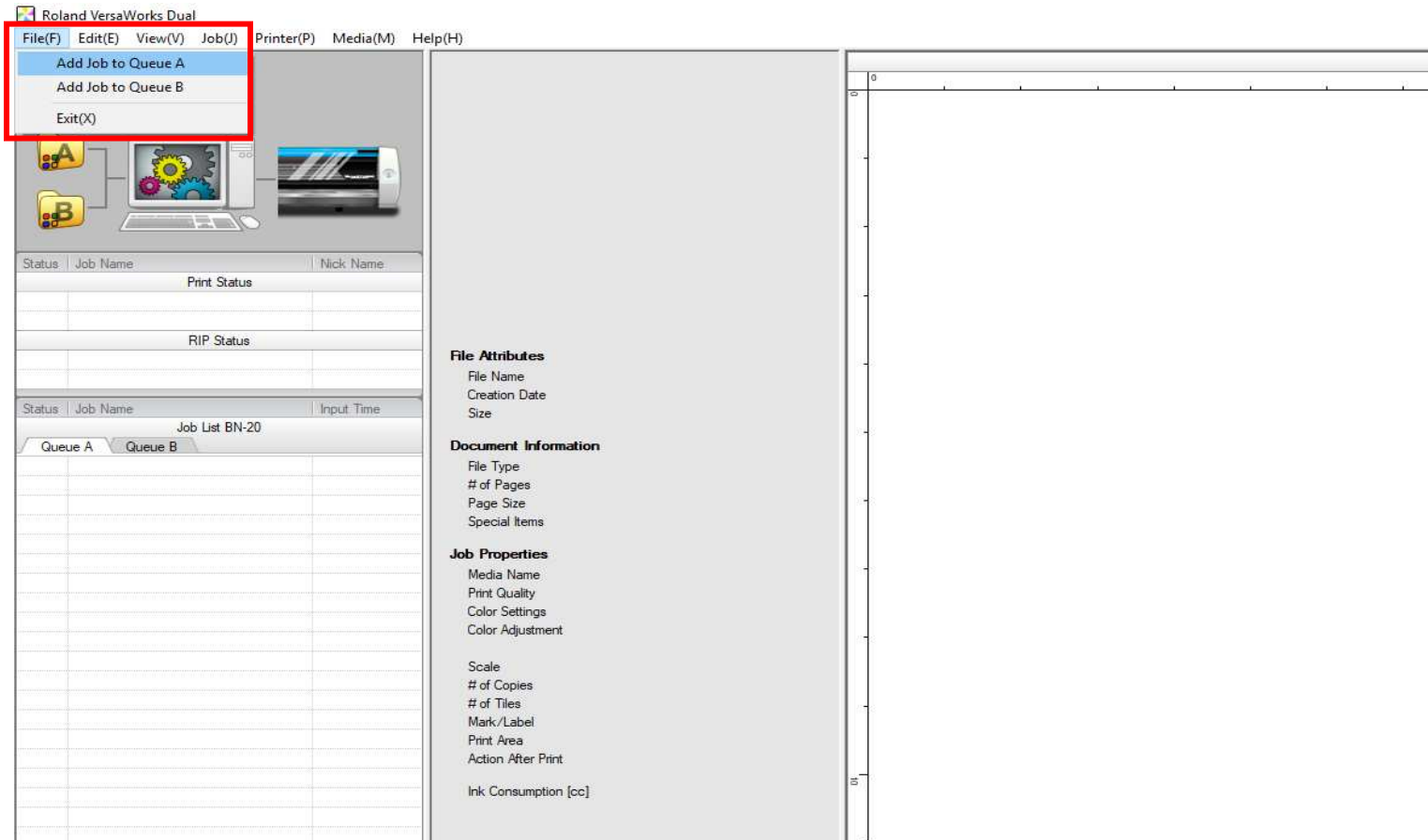


Roland Vinyl Printer

1. Open Roland VersaWorks from the desktop.



2. Click on File > Add Job to Queue A



The screenshot shows the Roland VersaWorks Dual software interface. The 'File' menu is open, and 'Add Job to Queue A' is highlighted. The interface includes a menu bar, a toolbar with icons for Queue A and B, a job list table, and a right-hand panel with sections for File Attributes, Document Information, and Job Properties.

File Attributes

- File Name
- Creation Date
- Size

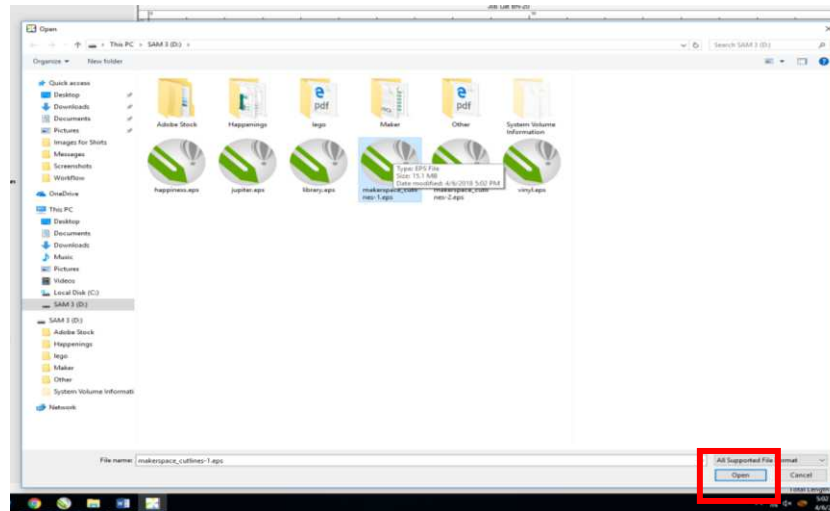
Document Information

- File Type
- # of Pages
- Page Size
- Special Items

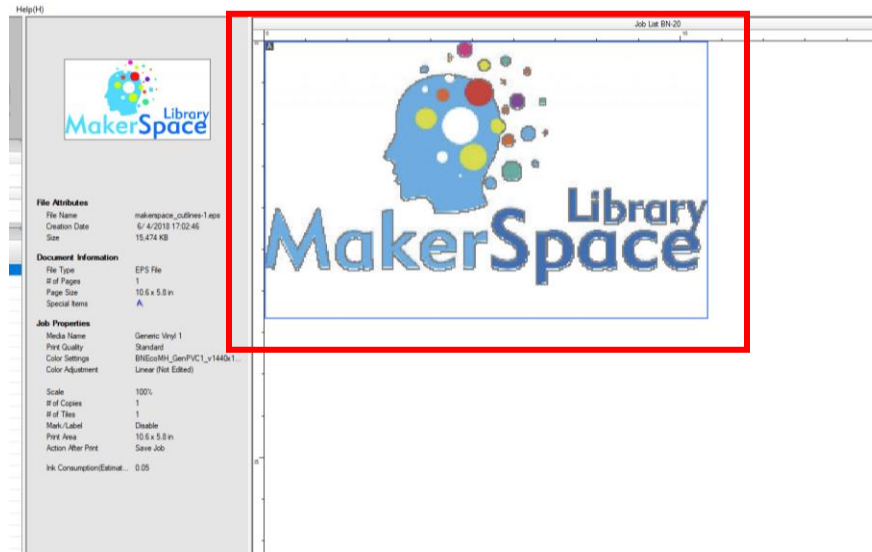
Job Properties

- Media Name
- Print Quality
- Color Settings
- Color Adjustment
- Scale
- # of Copies
- # of Tiles
- Mark/Label
- Print Area
- Action After Print
- Ink Consumption [cc]

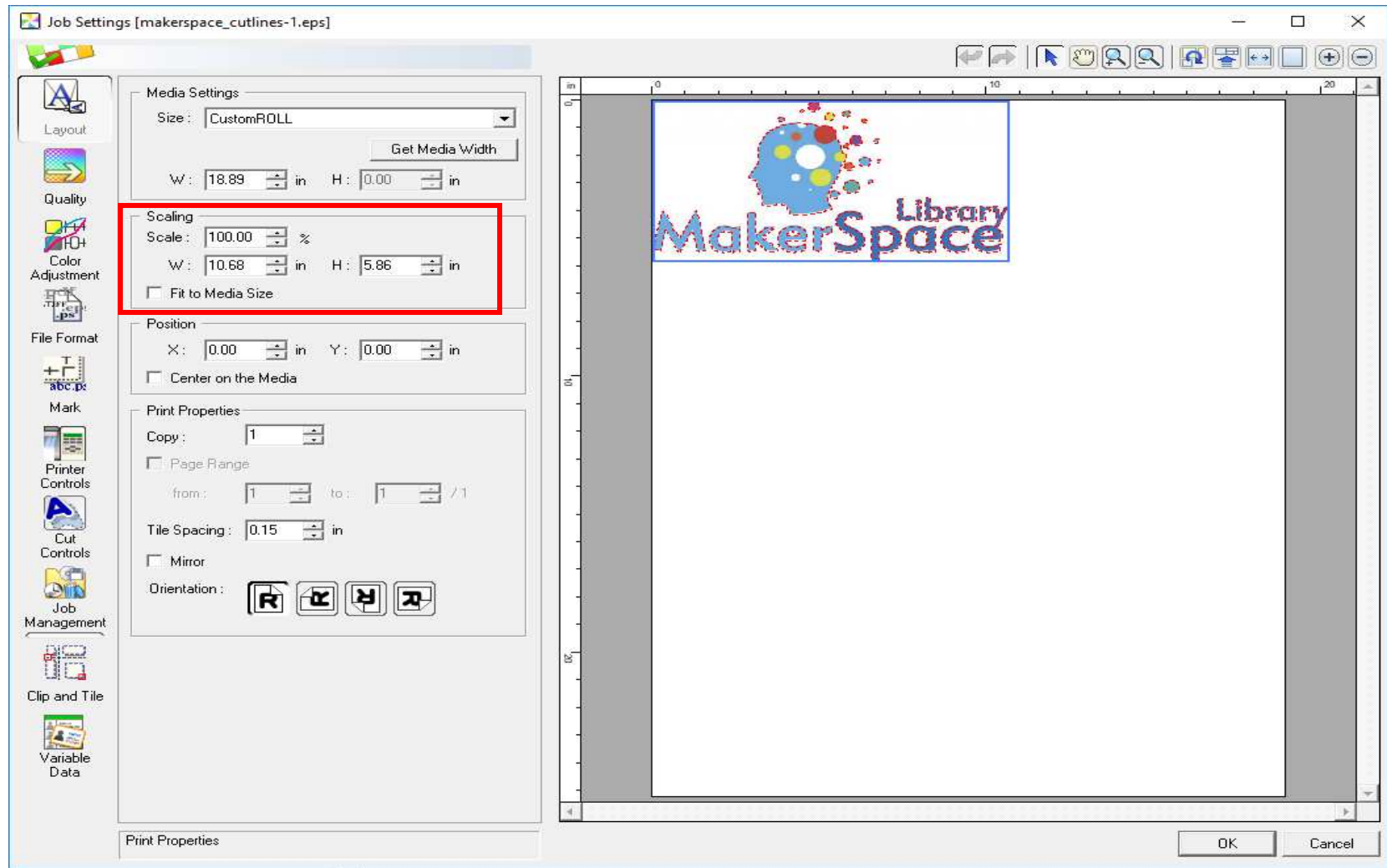
3. Find the file you want to open (EPS, PS, PDF, TIFF, JPEG) and click Open.



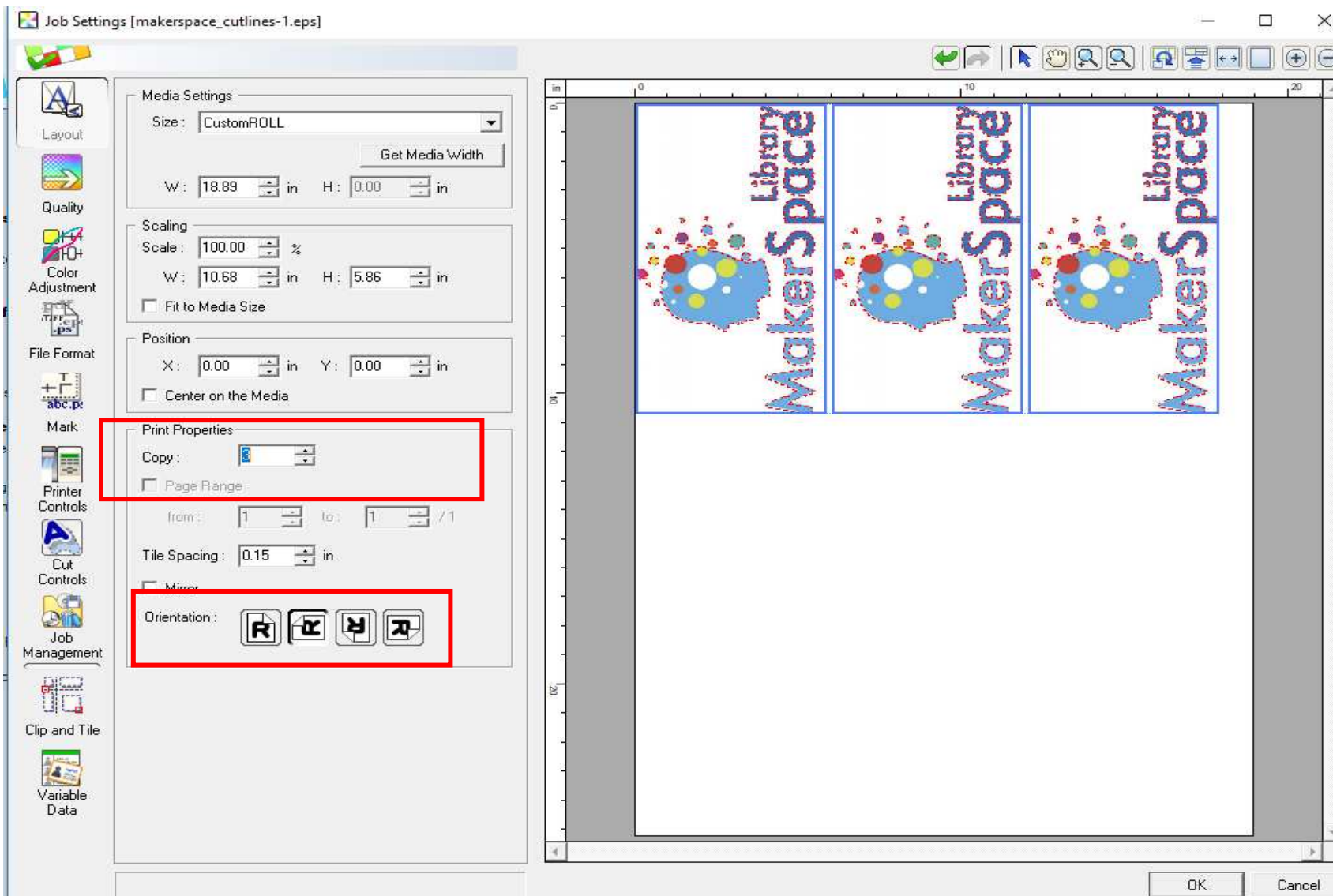
4. Double-click on the image.



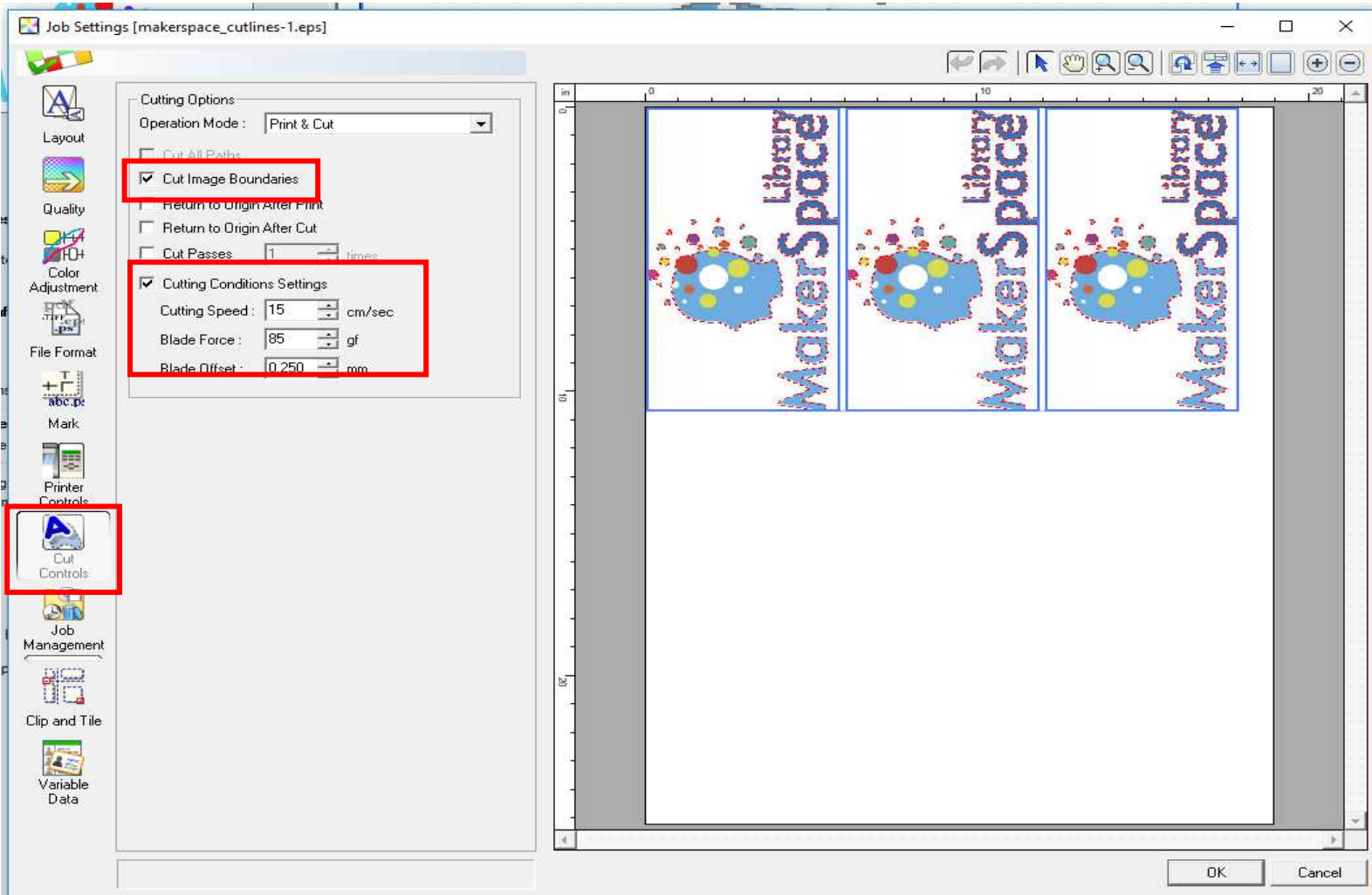
5. In this screen: (A dancing red line should appear if you made cut lines).
 - a. Scale the image to a different size.



b. Add copies and change the Orientation



6. Click on Cut Controls.
 - a. Check the Cut Image Boundaries box.
 - b. Check the Cutting Conditions Settings box.
 - Change the Blade Force to 85. It may need higher or lower because the blade dulls as it is used, so the setting should be higher when the blade has been used many times.
 - c. Click OK.



7. Click the Print button when ready to print. A status will show for RIP and then it will begin to print.

The screenshot displays the Roland VersaWorks Dual software interface. The main window shows a print job titled "Job List BN-20" with three vertical banners for "Library MakerSpace". The interface includes a menu bar (File(F), Edit(E), View(V), Job(J), Printer(P), Media(M), Help(H)), a status panel on the left, a central panel with job details, and a bottom toolbar. A red box highlights the "Print" button in the toolbar. Another red box highlights a table in the status panel showing the job's progress.

Status	Job Name	Nick Name
Ready to Print	makerspace_cutlines-1.eps	BN-20
RIP Status	makerspace_cutlines-1.eps	BN-20

File Attributes

File Name	makerspace_cutlines-1.eps
Creation Date	6/4/2018 17:02:46
Size	15,474 KB

Document Information

File Type	EPS File
# of Pages	1
Page Size	10.6 x 5.8 in
Special Items	A

Job Properties

Media Name	Generic Vinyl 1
Print Quality	Standard
Color Settings	BNEcoMH_GenPVC1_v1440x1...
Color Adjustment	Linear (Not Edited)
Scale	100%
# of Copies	3
# of Tiles	3
Mark/Label	Disable
Print Area	17.8 x 10.6 in
Action After Print	Save Job
Ink Consumption(Estimat...	0.15

Total Length : 0.88 feet
5:05 PM
4/6/2018