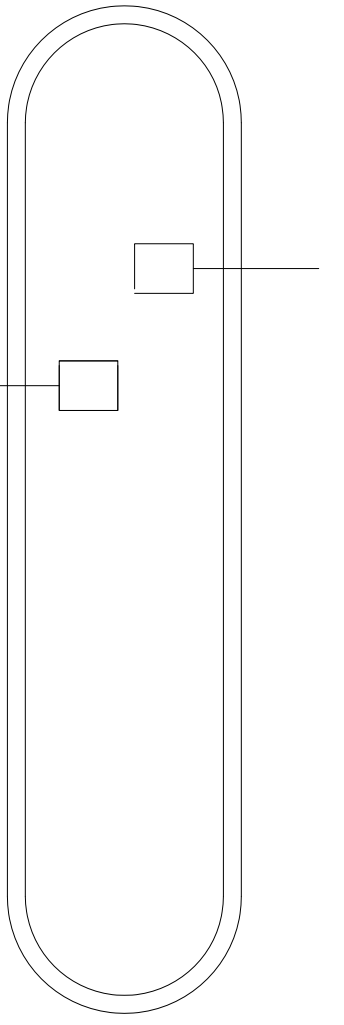
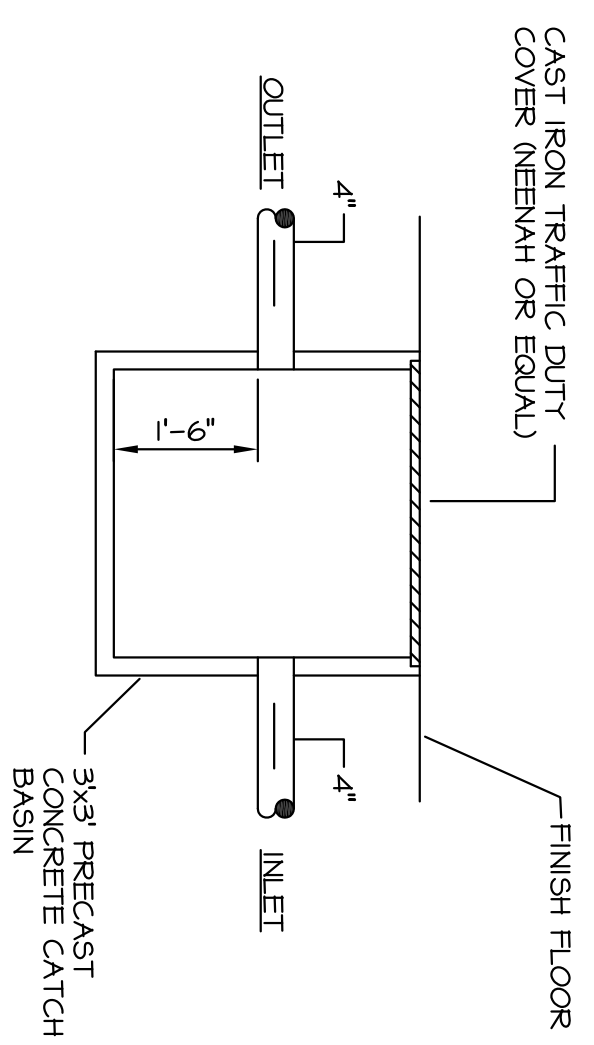
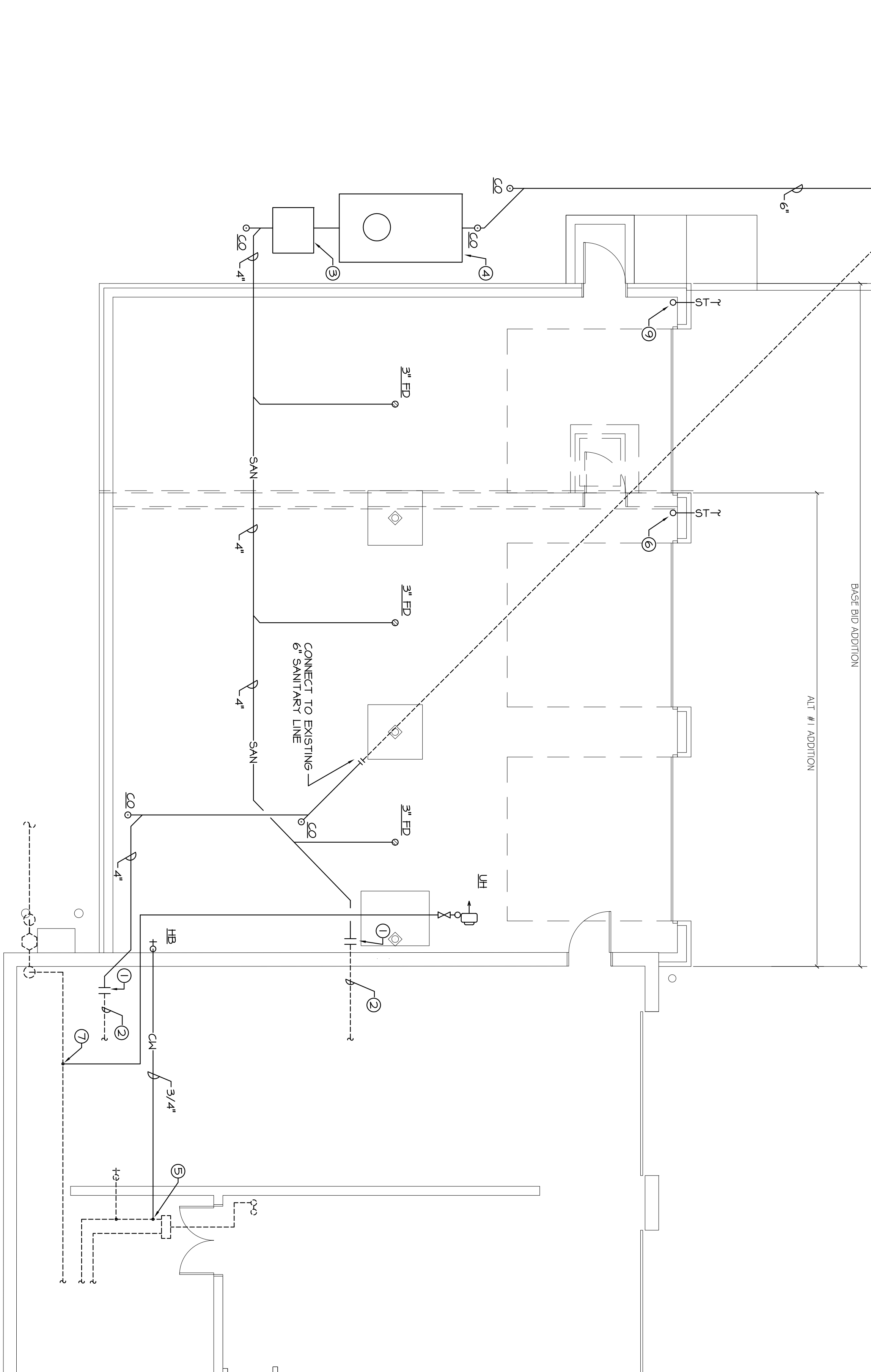


SCALE IN FEET 1/4"



EXISTING 6" SANITARY LINE TO REMAIN. PLUMBING CONTRACTOR SHALL VERIFY SIZE, SLOPE AND FLOW DIRECTION. CONNECT TO EXISTING 6" SANITARY LINE.



SAND TRAP DETAIL N.T.S.

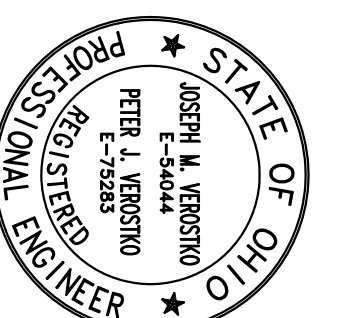
CODED NOTES

- ① PLUMBING CONTRACTOR SHALL CONNECT TO EXISTING 4" SANITARY LINE. CONTRACTOR SHALL VERIFY SLOPE, DIRECTION AND EXACT SIZE.
- ② EXISTING 4" SANITARY LINE TO REMAIN.
- ③ PLUMBING CONTRACTOR SHALL FURNISH AND INSTALL SAN TRAP. SEE DETAIL THIS DRAWING.
- ④ OIL INTERCEPTOR 778 GALLON OIL AND SAND SEPARATOR MACK INDUSTRIES DRAWING E-11
- ⑤ CONNECT TO EXISTING 1 1/4" CM LINE AS SHOWN.
- ⑥ 3" ROOF DRAIN LEADER DOWN TO BELOW GRADE AND EXTEND FOR CONNECT TO NEAREST STORM LINE BY PLUMBING CONTRACTOR.
- ⑦ 3/4" GAS LINE CONNECT TO NEW 4" GAS LINE EXTEND AS SHOWN.
- ⑧ PLUMBING CONTRACTOR SHALL REMOVE PORTION OF 3" GAS LINE BACK TO METER AND REPLACE WITH NEW 4" GAS LINE. NEW 4" GAS LINE SHALL EXTEND FROM METER TO NEW 1 1/4" CONNECTION. PLUMBING CONTRACTOR SHALL REDUCE TO 3" GAS AT THAT POINT.
- ⑨ 4" ROOF DRAIN LEADER DOWN TO BELOW GRADE AND EXTEND FOR CONNECT TO NEAREST STORM LINE BY PLUMBING CONTRACTOR.

NEWPORT LIBRARY GARAGE ADDITION

NEWPORT BRANCH LIBRARY

YOUNGSTOWN, OHIO



FANIRO ARCHITECTS, INC.

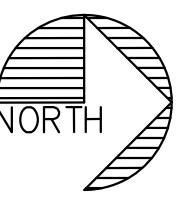
217 1/2 WEST FEDERAL STREET YOUNGSTOWN, OHIO 44503

FLOOR PLAN - PLUMBING

SCALE: 3/16"=1'-0"

PHONE: 330 747 2800

FACSIMILE: 330 747 2802



GASLOAD

EXISTING BUILDING 1698 CFH
 UNIT HEATER 45 CFH
 TOTAL 1743 CFH

GAS LINE SIZING BASED UPON
 400 L.F. OF 1/2" GAS.
 FINAL CONNECTIONS TO EQUIPMENT
 WITH UNION, SHUT-OFF VALVE AND
 DIRT LEG.

J.M. VEROSTKO, INC.
 CONSULTING ENGINEERS
 2781 SALT SPRINGS ROAD
 YOUNGSTOWN, OHIO 44509
 PHONE: (330) 799-1339
 URL: J.M.VEROSTKO.COM

SHEET NO. **P-2** DATE 30 SEPT. 2019

PROJ. NO. 1913 REV.

